

WYMARK SCHOOL NEWSLETTER

WYMARK SCHOOL PH: 778-9295 FAX: 778-9103
"THE MARK OF EXCELLENCE"

DECEMBER 2022

DECEMBER 1ST—

PRAIRIE WEST BAND CHRISTMAS CONCERT:

This year the Christmas Concert will be on Thursday, December 1 at 7:00 p.m. at the Irwin School gymnasium.

Artistic Expressions will be taking group photos before the concert. All band students must arrive by 6:00 p.m. for group pictures. Students will also have the option to have individual photos taken.

Students need to wear their band uniforms (white shirt, black pants, black shoes, black socks, cummerbund and bowtie).

Family, friends and community members are welcome to attend!

DECEMBER 1ST & 2ND—

GROWING SMILES FUNDRAISER PICK-UP:

Poinsettia, Wreaths, etc. pick-up is from 9:30am-3:30pm. Any items not picked up by 3:30pm on Friday, December 2nd, we will not be able to guarantee they will stay healthy and alive because they are not looked after on the weekend.

Total funds raised for playground equipment will be in our January newsletter.

Thank you for your support.



DECEMBER 14TH—

K-6 CHRISTMAS CONCERT:

Evening performance is at 6:30pm. Doors open at 6:00pm. **K-6 Students please be sure you arrive at 6:00pm.** All family and community members are welcome to attend. If family & community members are unable to attend the evening performance they are welcome to attend the dress rehearsal at 1:00pm.

There will be an opportunity to donate to the Wymark Futures Group scholarship fund that evening.

DECEMBER 14TH—19TH—

SCC FOOD DRIVE:

Our SCC will be collecting the following donations for the Salvation Army Food Bank: non-perishable food items, personal hygiene items, baby supplies, household cleaners and condiments. Donations will be accepted from December 14th - December 19th. Donations will be accepted upon arrival of the Christmas concert as well.

DECEMBER 20TH -

CHRISTMAS TURKEY DINNER:

Our SCC will be preparing Christmas dinner for all students and staff on **December 20th, 2022 at noon**. All leftovers will be donated. The school will be providing the turkey and various other items. We are asking each student by grade to bring the following (with the exception of Grade 6) by December 16th, 2022.

Kindergarten: 1 dozen buns (sliced)

Grade 1: 5 lbs potatoes (red)

Grade 2: 1 frozen bag of corn (small)

Grade 3: dozen desserts (store bought, pre packaged)

Grade 4: 2 Boxes Stove Top Stuffing

Grade 5: 10 juice boxes

***Grade 6:** 1 large bag mini carrots or 2 large English cucumbers

Grade 7/8: Miscellaneous Items (See Mr. Jago)

***Grade 6 please bring your vegetables by December 19th, 2022**

Please remember we are a **NUT FREE School**, so ensure your desserts do not include any.



WYMARK SCHOOL NEWSLETTER

WYMARK SCHOOL

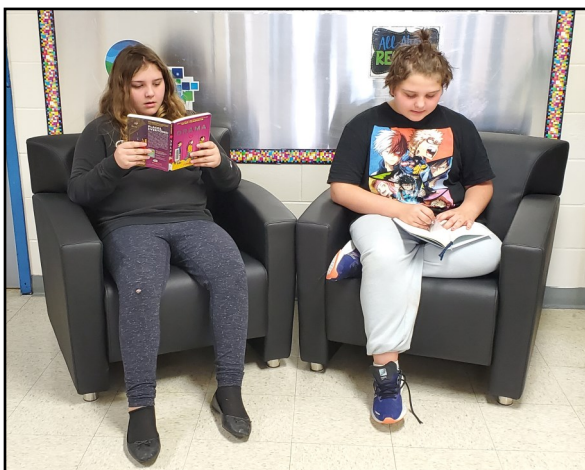
PH: 778-9295

FAX: 778-9103

"THE MARK OF EXCELLENCE"

NEW FURNITURE!!

With leftover funds from our gym floor fundraiser we were able to purchase furniture for student use in the hallway. It's great to see students using the new furniture!



CHINOOK SCHOOL DIVISION ADMINISTRATIVE PROCEDURE AP 132, CLOSURE, SEVERE WEATHER & STUDENT TRANSPORTATION:

"Individual bus drivers (rural driver's only) determine if their local bus route is to be canceled. This decision is to be made by 6:30 am for morning routes and no later than 1:00 pm for afternoon routes. Bus drivers must inform their families and school administration so alternate arrangements can be made."

Chinook buses will not commence their routes prior to normal departure time as we cannot ensure all students will have

supervision at home. If necessary, the principal is responsible for billeting students and staff at an emergency residence or at the school. Please ensure you have communicated billet arrangements to your school."

At any time, parents may choose to make arrangements for their child to be picked up early or have the right to keep their child at home during severe weather conditions."

It's not what's
under the tree that
matters, it's who's
around it.
Charlie Brown

DECEMBER SPIRIT DAYS

December 6th—Christmas Hat/Toque Day

December 8th—Christmas Sock Day

December 12th—All Out Day
(wear as much Christmas as possible)

December 16th—Frozen Friday
(wear your favourite flannel shirt)

December 20th—Christmas PJ Day

December 21st—Christmas Sweater/Shirt Day

**BROUGHT TO YOU BY THE
WYMARK SCHOOL STAFF**



DECEMBER 2022

WYMARK SCHOOL NEWSLETTER

WYMARK SCHOOL

PH: 778-9295

FAX: 778-9103

"THE MARK OF EXCELLENCE"

DECEMBER 2022

THE EMOTIONAL CUP

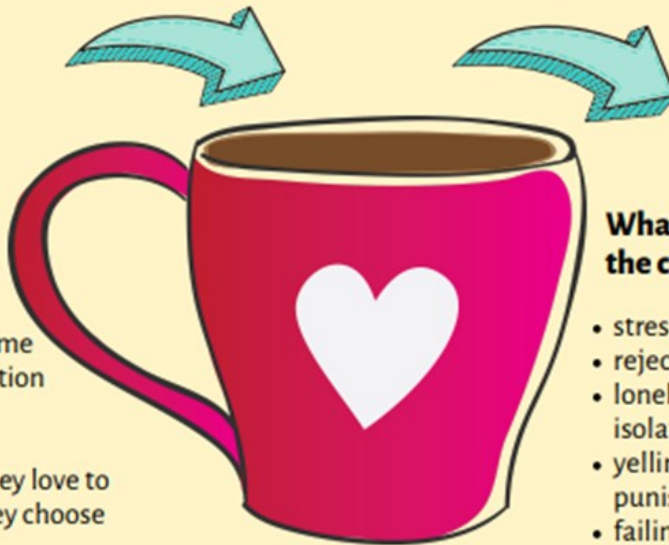
Imagine that every child has a cup that needs to be filled -- with affection, love, security, and attention. Some seem to have a full cup most of the time, or know good ways to get a refill. But most children get a little nervous when their cup gets near empty.

Some ways that children deal with having an empty cup:

- steal from other people's cups
- misbehave to get your attention and show that they need a refill
- seem to have bottomless cups, or need constant 'topping off'
- can't sit still for refills or actively refuse them
- bounce off the walls when they approach 'empty'
- think they have to fight or compete for every refill

What fills a child's cup:

- play
- friendship
- one-on-one time
- love and affection
- connection
- succeeding
- doing what they love to do or what they choose to do



What empties the cup:

- stress and strain
- rejection by peers
- loneliness and isolation
- yelling and punishment
- failing
- fatigue
- doing what they're forced to do or they hate to do

upbidity

Publisher of Therapy Resources





Sun	Mon	Tue	Wed	Thu	Fri	Sat
				1 Day 6 PRAIRIE WEST BAND CONCERT WINTER FUNDRAISER PICK-UP 9:30AM-3:30PM	2 KIN Day 1	3
4	5 Day 2	6 KIN Day 3 <i>Christmas Hat/ Toque Day</i> NO BAND	7 Day 4	8 KIN Day 5 BAND IN WYMARK (12-3PM) No FULL BAND IN SWIFT CURRENT <i>Christmas Sock Day</i>	9 Day 6	10
11	12 KIN Day 1 <i>All Out Day (Wear as much Christmas as possible)</i>	13 Day 2 BAND	14 KIN Day 3 K-6 CHRISTMAS CONCERT	15 Day 4	16 KIN Day 5 CHRISTMAS DINNER ITEMS DEADLINE <u>GRADES K-5, 7/8</u> <i>Frozen Friday</i>	17
18	19 Day 6 CHRISTMAS DINNER ITEMS DEADLINE <u>GRADE 6 ONLY</u>	20 KIN Day 1 CHRISTMAS DINNER <i>Christmas PJ Day</i> BAND	21 Day 2 <i>Christmas Sweater/Shirt Day</i>	22 CHRISTMAS BREAK	23	24
25	26	27	28	29	30	31
CHRISTMAS BREAK						



Upcoming Dates

January 4—Back to School

January 30—No School